

eRange



We value demanding customers. We care about details. That is why the eRange, an executive furniture system from BN Office Solution was developed at London design studio WertelOberfell Platform.

The furniture system is expressed in a revolutionary and stylish form that is based on the modernist ideas of the Bauhaus and functionalism.

We present a dynamic solution for those who are demanding of others, but can be demanding of themselves too.

Its designers describe it as follows:

eRange is a contemporary yet timeless system. The “e” refers to electronics, but it also stands for “essential.”

The eRange is a refined, modern and discreet system. It is a pure form of elegance.

With the eRange top quality comes as a standard.

eRange

Gernot Oberfell and Jan Wertel have trained with the famous Ross Lovegrove, the designer of Apple's iMac. They are now running their own design studio in London.



Both are fascinated by new technologies,
organics and bionics. These fields are the
source of their inspiration which they translate
into a digital language.



Inspirational space. For people who are sensitive to beauty

You consciously create the space around you. Places where you spend your time matter. They must be friendly, but not submissive. They should be admirable, yet not intrusive. Those places have a job to do: inspire.

Creative work requires stimulation and a work environment should support the formation of brave concepts. Your space must have personality – emphasise boldly who you are. It must show that you value challenges. Let it be modern, yet elegant and timeless. A blend of black and veneer is the choice of those who are conscious, brave, and open to new perspectives. Combined with the furniture's modern line, that juxtaposition creates a bold and dynamic interior. The eRange is a solution for professionals and visionaries, such as yourself.



*They always say time changes things,
but you actually have to change them yourself.*

(Andy Warhol)



A successful project comprises of:
timeless design, functionality and
attention to detail









Working space elegance can be added by using desktop inlays: a lacquered inlay made of hardened glass on the visitor side and a black leather inlay with 996 × 496 mm dimensions on the user side.

Exclusive details and refined finishes. Design that commands respect



Functional and discreet *cable management* is a must in modern furniture design. The eRange helps to hide all cabling inside the top, legs and side-board, taking cables out to power supply sockets which is normally pre-designed in a suitable location in the floor.



Important documents will always be at hand with the three push-to-open drawers in the fixed side board. The side board model with drawers has also an independent, extendable pencil drawer concealed in the desktop as a standard feature.

Perfect individual details,
perfect finish. We consider
every single one of them

You aim for perfection. You value what is special:
you notice perfection and can tell when something is
below par. The latter is of no interest to you.

The eRange was made by perfectionists, for perfectionists.
Furniture created by the London studio is both beautiful
and functional. The eRange works hand in hand with you
and assists in your work. It offers comfort, so that your talent
can thrive unhampered. It is your faithful partner on the way
to real success. Comfort and aesthetics go well together,
providing you with the luxury you deserve.



*Colours are music to the eyes
because they can be juxtaposed like notes.*

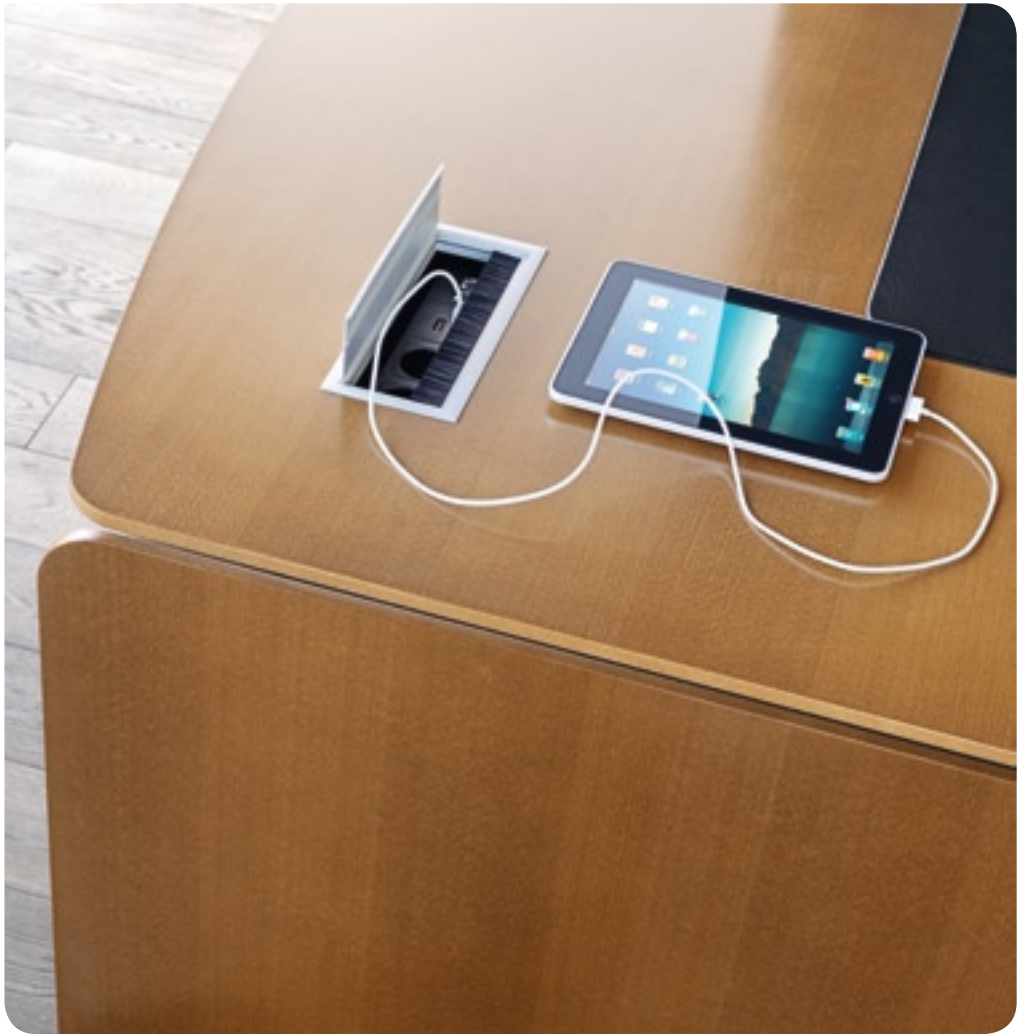
(Eugene Delacroix)



A subtle and sensual interior for a woman with a sense of taste



A power supply port concealed in desktop body can be accessed after opening a sleek aluminium cable outlet size 240 x 100 mm. Managers requiring easily accessible power supplies can use 2 power supply sockets, 2 USB ports and 2 RJ45 sockets.



Creative solutions or straightforward thinking. There are many roads to success







Black elegance with white refinement. Chic and dependable

Steadfast, determined and consequent – that is what the world of business is like. And so is the eRange: uncompromised, when it goes for style, but willing to cooperate and take on clearly defined tasks.

The eRange managerial office arranged in black and white is expressive and functional. All of its components, such as the power supply ports and the clever storage compartments do their job, while at the same time they form a part of an aesthetically pleasing whole. The eRange is a transparent system offering refined and practical space – perfect for business meetings and negotiations. The eRange offers solutions for those who take luxury for granted.



Aesthetics is the mother of ethics.

(Josif Brodski)



To plan on a large scale does not
mean you have to say goodbye
to class and taste







The tops of the rectangular desk and of the desk with rounded off back can have two drawers sized $350 \times 250 \times 40$ mm connected by a shared 915 mm wide front. Drawer fronts are flush with the desk frame, drawer bottoms are upholstered with black leather and their contents are accessible with just a delicate press of the front.



At a small meeting easy access to power supply and multimedia will be provided by a power supply port sized 327×84 mm installed in the free-standing conference table (available sockets include $3 \times$ power supply + $2 \times$ USB + $2 \times$ RJ45).



The well-designed structure of the fixed side board makes it possible to make maximum use of the space inside. Access is possible both from the user side and from the outside.

Success is a combination of talent and hard work. So is the eRange

An office flowing with positive energy stimulates one into action, an office in which optimism prevails. A perfect place for creativity and innovation. The solution for professionals who have tasted success early and are still enjoying it.

Today's world creates opportunity for rapid development. Only some people know how to use it well. The eRange is a managerial office system that individuals can use to express their extraordinary talent and skills. It offers space for creative people. It is just like them: clear, consistent and intelligent.



To become great man has to create, not imitate.

(Antoine de Saint-Exupéry)










Although the range of shapes in the eRange offer is minimal, the system unexpectedly offers plenty of storage space. This will certainly be provided by the mobile side board, available with hinged doors (80 cm) or hinged doors and drawers (120 cm).



The fronts of the eRange line have no handles at all. Access to confined spaces (hinged slab doors, glass doors and drawers) across the whole system is possible with a push-to-open mechanism.



The cabinets range has been designed so as to make a set of several cabinets topped with one shared veneered top (with maximum length 240 cm). Cabinets are available in two heights (2 OH or 3 OH) and look particularly nice as their external modules are rounded off on a 50 mm radius across the whole system.



Modernity offers
unlimited potential



Harmonious polyphony – elegant interiors promote streamline negotiations

A classic and calm space. The conference room is the heart of any company – it is here that strategic plans are made and important decisions taken. It is here that initial proposals are put forward and finishing touches are made.

Employees of your company work together on key projects and the methods of their implementation. Space in which they meet must be unique. The eRange was made with them in mind: a line of conference room furniture designed to assist a dynamic manager and his or her team. The system creates an aesthetically pleasing, toned-down interior which helps concentration and to identify the best solutions.



*Of the best kind of society one used to say that
its conversation is instructive, its silence formative.*

(Johann Wolfgang Goethe)



Series of intelligent solutions



Cable connections to devices requiring permanent connection to media are also available in mobile side boards, with an aluminium cable outlet sized 160 × 80 mm and the option to discreetly take cables outside.



Space for the round EVOLINE ports dedicated to conference tables has been smartly designed in table leg columns, so they are completely invisible when not in use. During larger meetings the EVOLINE port will offer 2 × power supply sockets + 2 × USB + 2 × RJ45.





The eRange cabinets, pedestals and side boards are available in veneer + melamine finish. The photo shows an example of side board in which the frame, fronts and back are veneer-coated, and the bottom panel, top panel and shelves are coated with ms Slate melamine. As natural veneer is not used in areas where it would be invisible or useless, it has a beneficial effect on the value of the product and the pocket of our customer.

Optionally, fronts in that piece can be fitted with folding key locks.





Stylish and elegant – eRange for the lovers of classic beauty

The eRange arrangement in classic style is a marriage of tradition and modern design. It is not a misalliance or a marriage of convenience – it is an elegant, harmonious and refined composition.

Furniture in classic cherry colour harmonises with elegant interior finishes and fine antiques. The interior takes on a unique character appreciated by even the most sublime connoisseurs of beauty. This arrangement emphasises the company's solid foundations, the prestige of the place and the position of the office owner. It will work out perfectly well at a law or notary's office, where respect for tradition and trust are of special importance. The eRange is a product for those who value tradition and modern solutions.



*Tradition is a beauty we protect
and not a bond that ties us up.*

(Ezra Pound)

Managerial office that
highlights prestige







The collection of luxury chairs from the Nowy Styl Group will excellently complement any workstation from the eRange offer.



A small desk (120 × 60 cm) often complements space design in the managerial office to serve as a desk extension. In this way the workspace of the main desk can remain the manager's pride.



Desks with two slab-end legs (without a side board) will be excellently complemented by a mobile pedestal in which small items can be stored. It is optionally available with two or three drawers, or as a standard – with a pencil drawer concealed in the first drawer.

Overview

Desks

Desk and slab-end tops consist of a carcass made of 72 mm high lacquered medium density fibreboard and a 13 mm thick veneered top. The structure of the desk makes it possible to run cabling inside the top and legs so as to hide any cables. The eRange line offers 3 shapes of desktops: rectangular, rounded off on the back and rounded off bilaterally. Optionally, the desk can be integrated with a fixed side board, in which case it only has one slab-end leg. The fixed side boards are available in 4 types:

- › 4 hinged doors,
- › 3 hinged doors + 3 drawers with a built in pencil drawer,
- › 5 hinged doors,
- › 4 hinged doors + 3 drawers with a built in pencil drawer.

The carcass, fronts and shelves of the side board are made of 19 mm thick veneered board, and bottom and top panels and the cover are made of 13 mm veneered board. Optionally, the back, the bottom and top panels and the shelves can be made of MS Slate melamine coated board. Desk carcasses made of MDF are available in RAL colours as per the current offer. Tops of desks and legs are available in open-pore or closed-pore lacquered veneers.

RECTANGULAR



DEPTH	WIDTH
60 cm	120 cm
100 cm	180 cm
	200 cm
	220 cm

RECTANGULAR FOR LINKING WITH FIXED SIDE BOARD



DEPTH	WIDTH
100 cm	200 cm
	220 cm

WITH ROUNDED OFF BACK



DEPTH	WIDTH
100/110 cm	180 cm
	200 cm
	220 cm

WITH ROUNDED OFF BACK FOR LINKING WITH FIXED SIDE BOARD



DEPTH	WIDTH
100/110 cm	200 cm
	220 cm

ROUNDED OFF ON BOTH SIDES



DEPTH	WIDTH
100/110 cm	180 cm
	200 cm
	220 cm

FIXED SIDE BOARD

RIGHT/LEFT

160 cm	4 hinged doors
	3 hinged doors + 3 drawers with a built in pencil drawer
200 cm	5 hinged doors
	4 hinged doors + 3 drawers with a built in pencil drawer

Additional elements

In the rectangular desk and the desk with rounded off back a black leather inlay can be set in the desktop, as an option.

The rectangular desk can have a lacquered hardened glass inlay or a leather and glass combination inlay on the visitor side of the top.



Panels

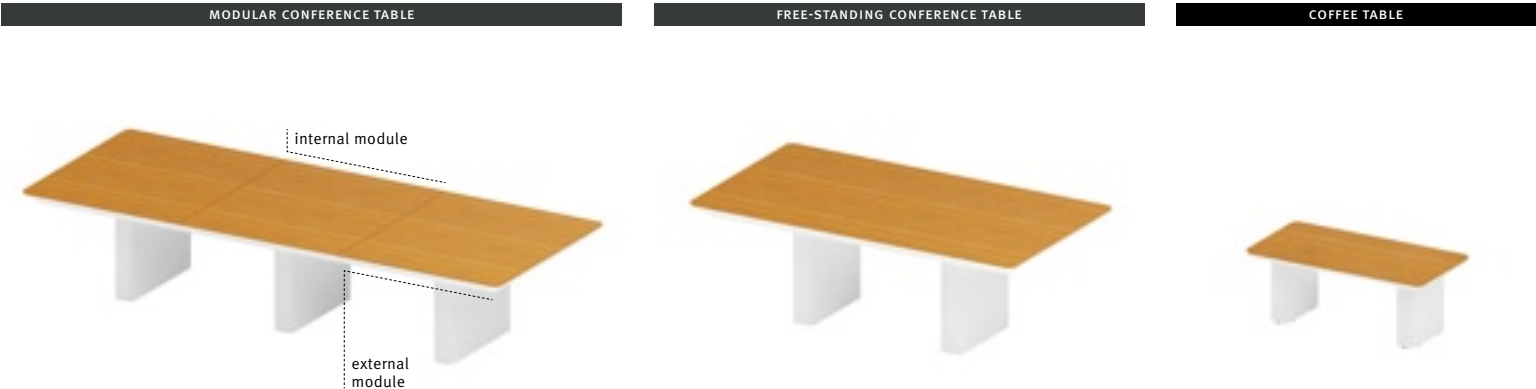
Managers' discretion will be taken care of thanks to modesty panels for both free-standing desks and desks integrated with a fixed side board. The lower edge of the panel is 31.7 cm above the floor level. The panel is nicely retracted by 30 cm.



Conference tables

Conference tables are an integral part of the eRange line. They come in units or as free standing pieces. In conference tables desktops are structured in a similar way as in desks. Dimensions of conference tables are 120 × 140 cm for the external unit (rounded off on one side) or the internal unit, and 220 × 120 cm for the free standing table.

Modular tables can be built of internal and external components to make up sets of virtually unlimited length. The offer is completed with a 45 cm high coffee table.



DIMENSIONS	HEIGHT
internal module	
120 × 140 cm	75 cm
external module	
120 × 140 cm	75 cm

DIMENSIONS	HEIGHT
220 × 120 cm	75 cm

DIMENSIONS	HEIGHT
120 × 60 cm	45 cm

Mobile pedestals and side boards

Within the eRange offer the pedestal is only available as a mobile and is available in two configurations:

- › 3 drawers + pencil drawer,
- › 2 drawers + pencil drawer.

The carcass and fronts of the pedestal are made of 19 mm thick veneered board. Bottom and top panels and insides of drawers are made of MS Slate coloured melamine board. The top of the pedestal is made of 13 mm thick veneered board. The frame of the pedestal is set on a 38 mm high lacquered plinth made of MDF. The plinth has four castors (two of which have brakes). The pedestals come without a lock, as a standard. Optionally, the top drawer can be fitted with a lock with two folding keys. Fronts of the pedestals and the pencil drawer have no handles and are opened with a push-to-open mechanism.

Mobile side boards are available as the following 3 types:

- › 2 × hinged doors (80 cm),
- › 2 × hinged doors + 2 drawers (120 cm),
- › 2 × hinged doors + 3 drawers (120 cm).

Mobile side boards are structured in a similar way as pedestals, with the exception that all optionally available components can be made of a fully veneered board. Drawer slides in pedestals and side boards are completely concealed, located underneath drawer bottoms. The high drawer has two side bars linking the front of the drawer with the back, on which document files can be hung.

MOBILE PEDESTALS

2 drawers + pencil drawer (see page 49)



3 drawers + pencil drawer (see page 49)



WIDTH	DEPTH	HEIGHT
2 drawers + pencil drawer		
41 cm	60 cm	64.3 cm
3 drawers + pencil drawer		
41 cm	60 cm	64.3 cm

MOBILE SIDE BOARDS

2 × hinged slab doors



2 × hinged slab doors + 2 × drawers



2 × hinged slab doors + 3 × drawers



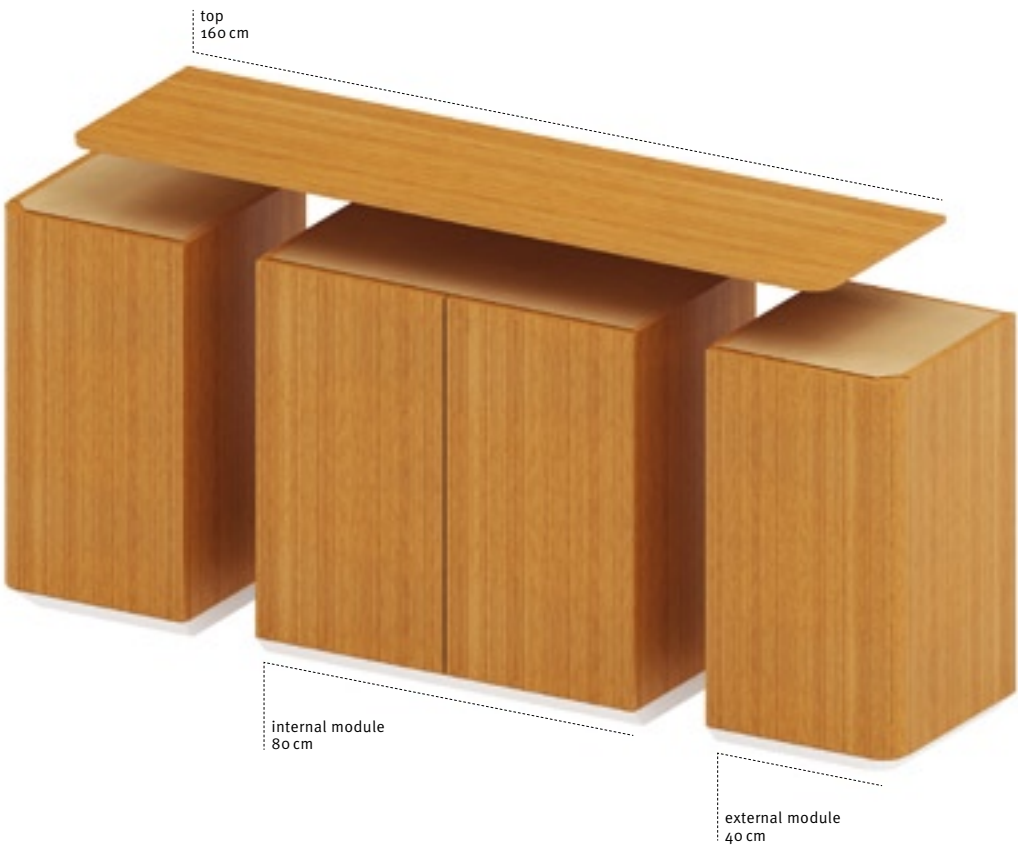
WIDTH	DEPTH	HEIGHT
2 × hinged slab doors		
80 cm	45 cm	63.8 cm
2 × hinged slab doors + 2 × drawers		
120 cm	45 cm	63.8 cm
2 × hinged slab doors + 3 × drawers		
120 cm	45 cm	63.8 cm

Cabinets

The eRange cabinet offer includes cabinets with slab and glass doors and open-shelf cabinets. All cabinets come in two heights: 2 OH or 3 OH. Their characteristic structure – external units (rounded off on one side) and internal units, make it possible to link units into sets of cabinets. One top shared by all units (with maximum uninterrupted length of 240 cm) gives an elegant finish to the whole set. The carcass, shelves and fronts of cabinets are made of 19 mm thick veneered board, while bottom and top panels, the cover and the back are made of 13 mm veneered board.

Slab door and glass door cabinets may come optionally in a veneer/melamine combination, where bottom and top panels and shelves are made of MS Slate melamine-coated board. Fronts of glass door cabinets are made of 6 mm thick hardened glass lacquered inside with a RAL colour from the offer. Handles of glass cabinets and slab door cabinets have been replaced with the push-to-open system.

EXAMPLE OF A SET OF CABINETS



FREE-STANDING CABINET (ROUNDED OFF ON BOTH SIDES)



HEIGHT	WIDTH	TOP LENGTH
DEPTH 45 CM		
free-standing cabinet (rounded off on both sides)		80 CM
2 OH	80 cm	120 CM
3 OH	80 cm	160 CM
internal module		200 CM
2 OH	40 cm	240 CM
	80 cm	
3 OH	40 cm	
	80 cm	
external module		
2 OH	40 cm	
	80 cm	
3 OH	40 cm	
	80 cm	

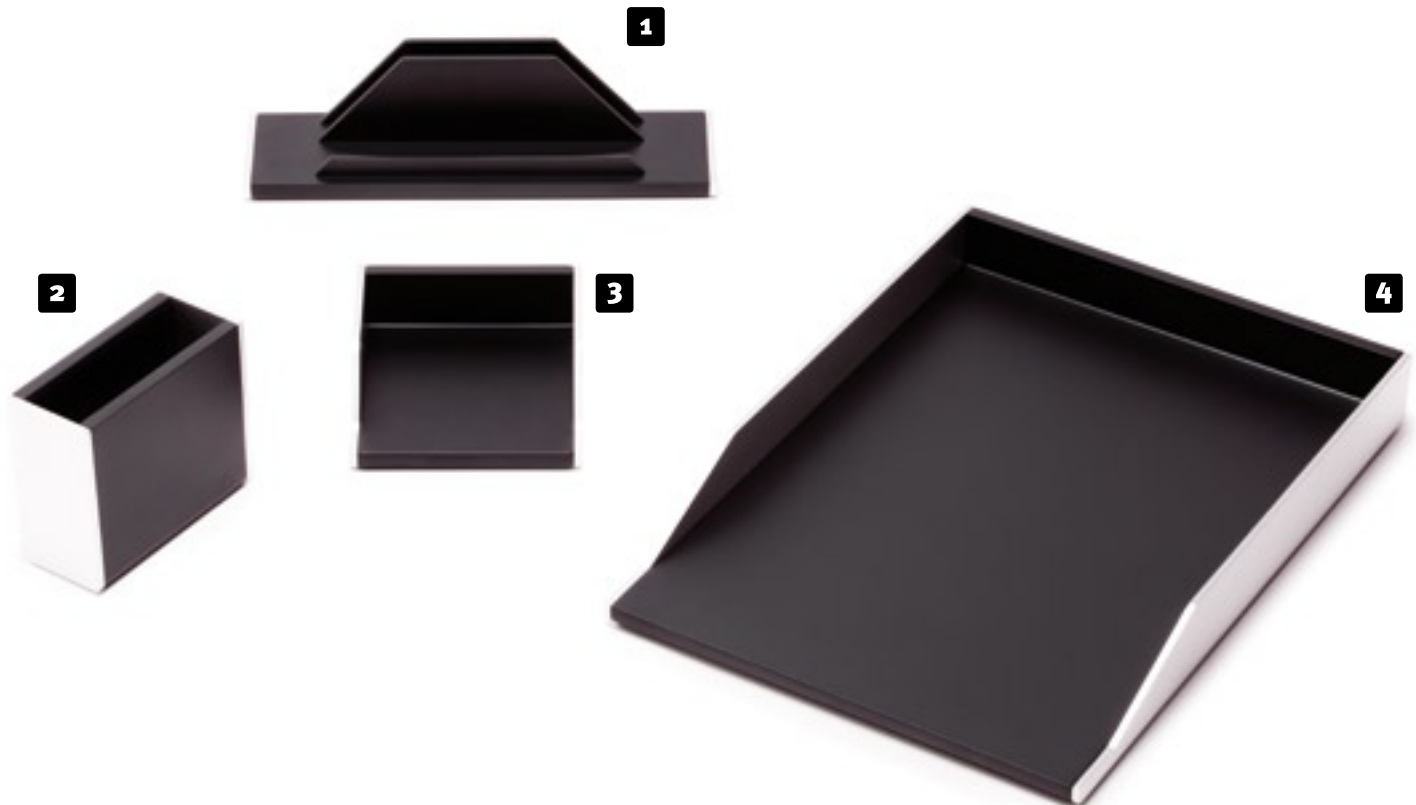
Accessories



We have prepared an offer of a few elegant accessories to use on the desktop of your eRange piece for an even better organisation of your workplace.

Here is what you will find helpful in your daily work:

- 1** mail tray
- 2** stationery box
- 3** box for a small memo book
- 4** A4 documents tray



Colour patterns

CLOSED PORE VENEERS +4



AE Maple



LN Beech Natur



LH Beech Honey



LV Beech Havana



LK Classic Cherry



BG Beech Grey

OPEN PORE VENEERS +5



CB Beech Colombo



BC Bamboo



OA American Nut

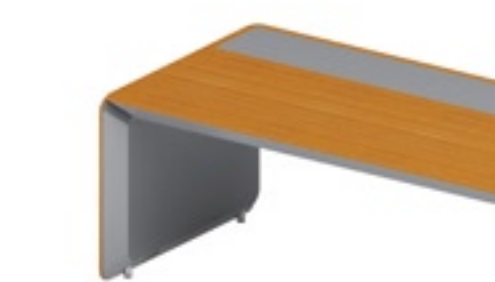
MDF / GLASS



FI / SI White (RAL 9003) *



FG / SG Black (RAL 7021) *



FS / SS Grey (RAL 7012) *

* An optional inlay made of hardened glass showed in the photo.

When composing colour patterns for your eRange furniture please select the veneer and the colour of MDF board and glass. Colours of finishes in the catalogue may vary from actual colours. The manufacturer reserves the right to introduce changes to colours, patterns and dimensions of the presented products.

BN Office Solution

EXPORT DEPARTMENT

ul. Mięsowicza 6

38-400 Krosno

Poland

TEL +48 13 436 36 05

FAX +48 13 437 62 57

E-MAIL info@bnos.com

The full offer can be found at [**www.bnos.com**](http://www.bnos.com)

NOWY STYL GROUP

BN Office Solution brand
belongs to the Nowy Styl Group

www.nowystylgroup.com

> **delivering variety**

